

# Milan and Mary Kirchhoff Farm Retirement

# AUCTION

*Live!* WEDNESDAY, NOVEMBER 16 AT 10AM CDT 2022

Auction held at 1876 230th Street, Waverly, Iowa

## MFWD TRACTORS

**2010 John Deere 8225R**, 1,322 hrs., powershift, CAH, 4 hyd., 3 pt. w/quick hitch, 540/1000/Lg. 1000 PTO, HID lighting, (4) front suitcase weights, (2) 450 lb. rear wheel weights, AM/FM, poly front fenders, 380/85R34 fronts, 480/80R46 rear duals, S/N 1RW8225REAP009998  
**2010 John Deere 7930**, 1,244 hrs., IVT 40K, LHR, 4 hyd. w/case drain, 3 pt. w/Cat 3 quick hitch, 540/1000/Lg. 1000 PTO, Deluxe CommandView cab, HID lighting, (4) front suitcase weights, (2) 450 lb. rear wheel weights, power adj. mirrors, rotating beacon, GreenStar & AutoTrac ready, 45 gpm hyd. pump, poly front fenders, Cat 3 drawbar, dual beam radar sensor, instructional seat, 380/85R30 fronts, 420/80R46 rear duals, S/N 1RW7930DEAD031736  
**2008 John Deere 8130**, 1,668 hrs., powershift, CAH, 4 hyd., 3 pt. w/quick hitch, 540/1000/Lg. 1000 PTO, (4) front suitcase weights, Greenstar & AutoTrac ready, 44 gpm hyd. pump, poly front fenders, 380/85R34 fronts, 480/80R46 rear duals, S/N RW8130P024981

## FRONT LOADER & ATTACH.

**Westendorf 570 Freedom Mount**, came off JD 7930 tractor, aux. hydraulics, 96" quick-tach bucket w/bolt-on cutting edge, S/N 0002430  
**Cobra**, grapple bucket, Westendorf mounts, hyd. grapple, S/N 05394  
**Westendorf**, pallet forks, Westendorf mounts, 48" forks, shop-built brick fence  
**Bale Spear**, Westendorf mounts, (1) 43" bolt-on spear & (2) 12" spears

## COMBINE

**2009 John Deere 9570STS**, 983 sep./1,582 eng. hrs. premier cab, Contour-Master, HID lighting, HHC, GreenStar display, HD reverser, fine cut chopper w/power tailboard, 21' unload auger, Cray Big Top grain tank ext., HC feeder house lift cylinders, 30.5L-32 fronts, 18.4-26 rears, S/N H09570S730626

## HEADS

**2008 John Deere 606C**, corn head, 6x30", single pt. hookups, stubble lights, opposed knife rolls, hyd. deck plates, AHHC, (6) stalk stompers, S/N H0606CX725346  
**2004 John Deere 620F**, flex head, 20', hyd. fore/aft, single pt. hookups, stubble lights, poly crop dividers, high stone dam, S/N H00620F705588

## HEAD TRAILER

**Unverferth HT25**, 25', ext. tongue, rear hitch, (2) tie downs, 7.50-10 tires, S/N A51900509

## PLANTER

**2007 John Deere 1770NT**, CCS planter, 12x30", 2 pt., front fold, ground-driven, 1/2 width drive disconnect, tri-fold markers, HD down force springs, Precision Clean Sweep row cleaners, rubber closing wheels, ComputerTrak 350 monitor, 10.00-15 tires, rear trailer hitch, aux. hyd. hookup, hyd. lift, hyd. swing w/remote control, roll tarp, 235/85R16 tires, S/N A01770Z725107

## SEED TENDER

**J&M 275ST**, seed tender, tandem axle gooseneck, (2) compartment, 7,000 lb. axles, Weigh-Tronix scale, electric start Honda GX340 gas engine, 19"x7" belt conveyor, 2" paddles, hyd. lift, hyd. swing w/remote control, roll tarp, 235/85R16 tires, S/N 1303183

## TILLAGE EQUIPMENT

**John Deere 2100**, inline ripper, 3 pt., (5) ASR shanks, 30" spacing, 21" spring mounted coulters (NEW shank protectors & new 7" pts.) 20.5x8.0-10 gauge wheels, S/N N02100X000551  
**Kewanee**, disc chisel, (9) spring mounted shanks, 15" spacing, 4" twisted shovels, rock flex gang w/22" discs, rigid scrapers, rear harrow, 12.5L-15 tires  
**Case IH 496**, disc, 21", pull-type, 21.5" blades, 9" spacing, single pt. depth control, 3-bar coil tine harrow, 9.5L-14 tires, duals on main, singles on wings, S/N 0158907  
**John Deere 980**, field cultivator, 28', pull-type, single pt. depth control, shank protectors, new 7" sweeps, 3-bar coil tine harrow, 9.5L-15 tires, walking tandems across, S/N N00980X019677  
**John Deere 875**, row crop cultivator, 8x30", 3 pt., rolling shields

## DAY CAB SEMI

**2000 Freightliner FL70**, 151,000 miles, Caterpillar 3126, Eaton Fuller 9 speed, single axle, air susp., dual 45 gal. alum. fuel tanks, air ride cab, 10,000 lb. front axle, 21,000 lb. rear axle, PW, PL, AM/FM/WB, (2) side mount storage boxes, 150" WB, 11R22.5 tires, (2) alum., (4) steel, VIN 1FV6HJBAXYHF00802

## HOPPER BOTTOM TRAILER

**2004 Timpte**, grain hopper, 28-1/2"x96"x66", aluminum, tandem axle, spring susp., (2) hoppers w/roller traps, SS front corners, Shur-Co 3500 Series electric roll tarp w/remote, 20,000 lb. axles, front & rear ladders, 11R22.5 tires, steel wheels, VIN 1TDH286284B104346

## PICKUP TRUCK

**1999 Ford F-350**, 149,629 miles, 4WD, 7.3L Powerstroke, automatic, ext. cab, dually, performance chip, gooseneck hitch, reinforced bumper hitch, front tow hooks, trailer brake controller, PW, PM, PL, cruise control, tilt wheel, air/heat, AM/FM, 235/85R16 tires, VIN 1FTWX33F9XED65409

## TRAILERS

**2018 B&B**, gooseneck flatbed trailer, tandem axle, 28"x102", 4' front stationary deck, 24' hyd. tilt, spring susp., 12,000 lb. axles, dual landing gear, electric over hyd. brakes, (2) storage boxes, (8) D-rings/side, 2-5/16" adj. ball coupler, 235/85R16 tires, VIN 4LSFB3523JF045412 (Owner states never used)  
**2011 Kiefer**, gooseneck trailer, tandem axle, 20'x102"+5" tail, spring susp., flip up ramps, electric over hyd. brakes, (2) storage boxes, dual landing gear, 12,000 lb. axles, 2-5/16" adj. ball coupler, stake pockets, (4) D-rings, 235/80R16 tires, VIN 1DVDF2520BK058752

## PASSENGER CAR

**2007 Honda Accord**, 212,416 miles, 2WD, 2.4L DOHC, automatic, tilt wheel, cruise control, air/heat, AM/FM/CD, PW, PM, PL, 205/65R15 tires, VIN 3HGCM56477G706009

## TRACK SKID STEER & ATTACH.

**2020 Case TV370B**, 50 hrs., diesel, CAH, ISO/Case controls, AM/FM, back up camera, aux. hyd., aux. power supply, hyd. quick-tach w/84" bucket, bolt-on cutting edge, 17" Camso tracks, S/N JAVTV370JLM490006

**Grouser**, blade, 8', 6-way hyd. blade, bolt-on cutting edge, electric controls, cast mounting plate  
**Stinger**, pallet forks, 48" forks

## DOZER

**1994 Case 850G Long Track**, 3,831 hrs., powershift, ROPS, 28" tracks, 10' semi-U 6-way blade, 4-speed, torque converter, std. work lights, rear hitch, rear cab debris guard, S/N JJG0217467



## DIRT SCRAPER

**2005 Ashland I-110XL**, pull-type, hyd. ejection, 11 yd. capacity, push bar, 16.5L-16.1 fronts, 18.4-26 rears, S/N 21088

## GRAIN CART

**Killbros 1200**, 1000 PTO, dual bottom augers, 12" unload auger, spout light, warning lights, 24.5-32 diamond tread tires

## AUGER & BELT CONVEYOR TECHNOLOGY

**Westfield WR80-36**, truck auger, 8"x36", electric drive, Dayton 10 hp. electric motor, single phase, 215/75R15 tires, S/N 213036  
**Quality Plus 518H**, belt conveyor, 8"x18.5" w/2" paddles, hyd. drive, w/flow valve, S/N 51584

## BATWING MOWER

**John Deere HX15**, 15', 1000 PTO, chain guards, spring susp., 21x7-12 tires, S/N 1POHX15FHHP074090

## RIDING LAWN MOWER

**2015 John Deere X739**, 206 hrs., 60" deck, liquid cooled Kawasaki 25 hp., aux. hyd., 3 pt., 540 PTO, 4x4, all wheel steer, hydrostatic drive, diff. lock, hyd. deck lift, cruise control, 18x8.50-10 fronts, 26x12.00-12 rears, S/N 1MOX739ACFM031309

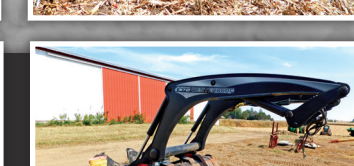
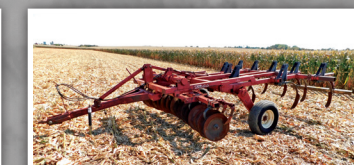
## SLIDE-IN CAMPER

**1997 Lance Legend 980**, 11'3", electric jacks, electric awning, rear ladder, roof A/C, over cab bed, refrigerator/freezer, sink, microwave, gas stove, shower/toilet, Generac Impact 34 hp. gas generator, 20 hrs., S/N 133221

## FUEL TANKS

(2) 500 Gal. Fuel Tanks, Gasboy 120v pump, filter, auto shutoff, sight gauge, horizontal tank

*Online Bidding Available!*



For information contact Tracy Coffland of Steffes Group, 319.382.2000 or 319.350.5003



319.385.2000 | [SteffesGroup.com](http://SteffesGroup.com)

Steffes Group, Inc., 2245 East Bluegrass Road, Mt. Pleasant, IA 52641



TERMS: All items sold as is where is. Payment of cash or check must be made sale day before removal of items. Statements made auction day take precedence over all advertising. \$35 documentation fee applies to all titled vehicles. Titles will be mailed. Canadian buyers need a bank letter or credit to facilitate border transfer.



*scan for auction details!*